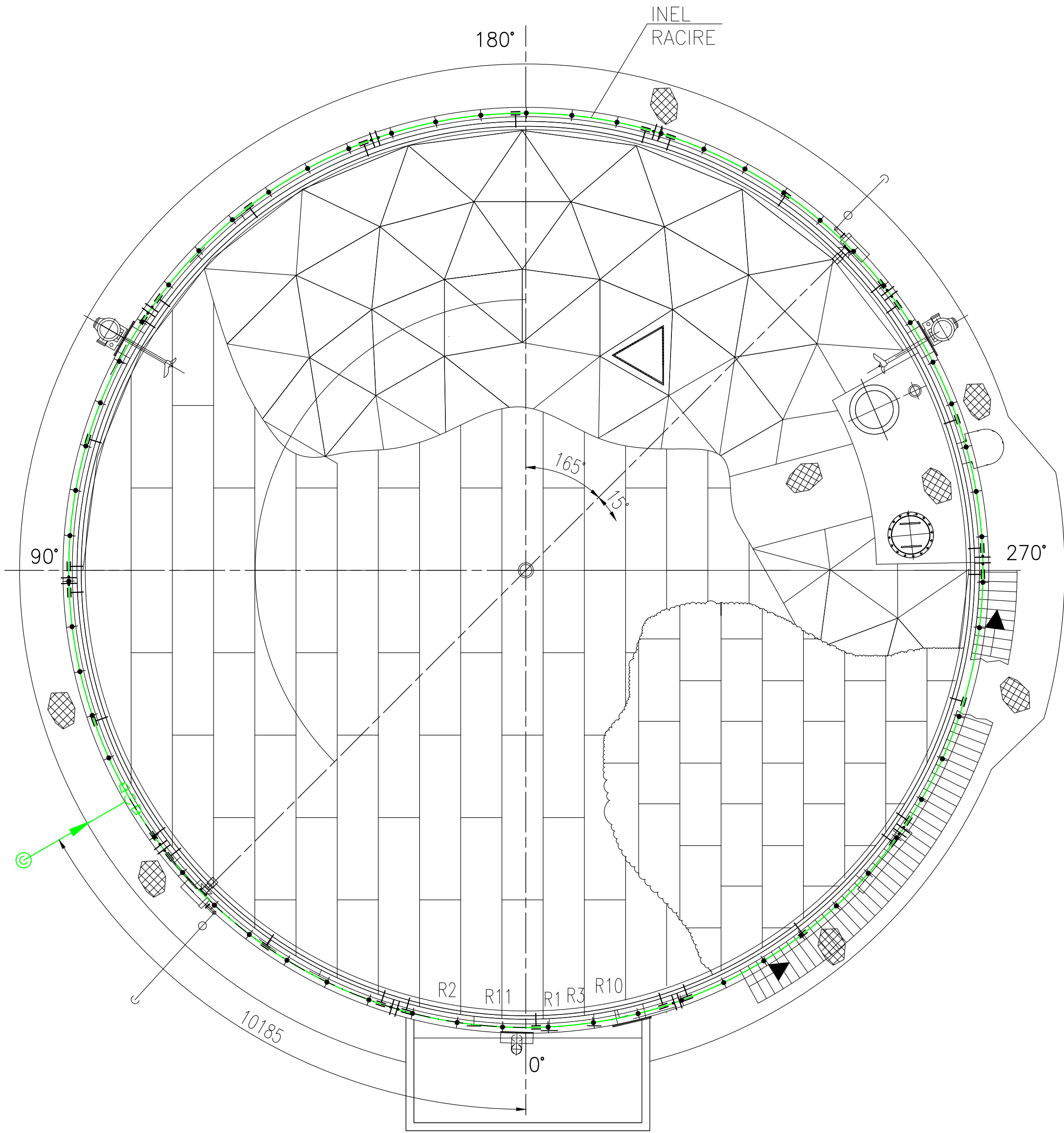
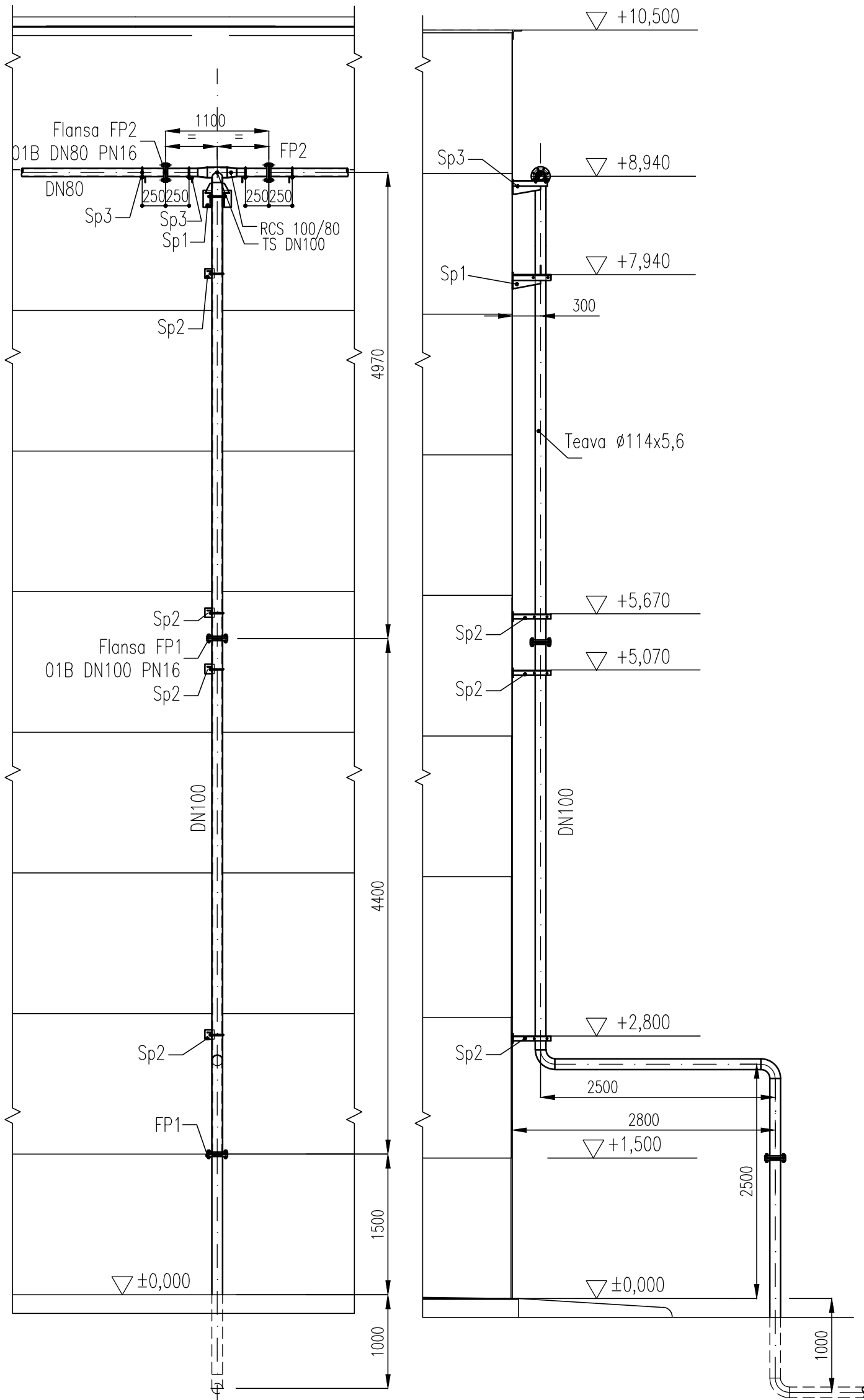


A
B
C
D
E
F
G
H
I
J
K
L

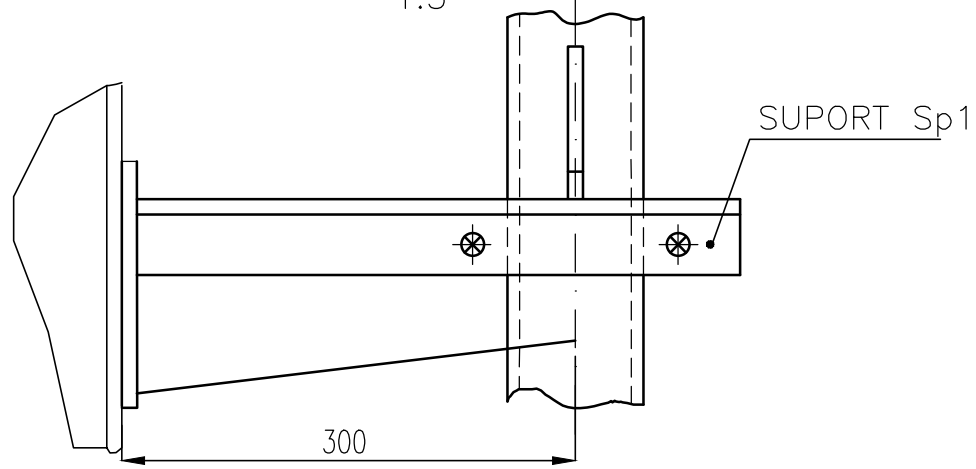
KLUSIV DE FOLOSIRE A DESENULUI SAU DE OPERARE A EVENTUALEI MODIFICARI DIN CAMPIUL ACESTUIA.



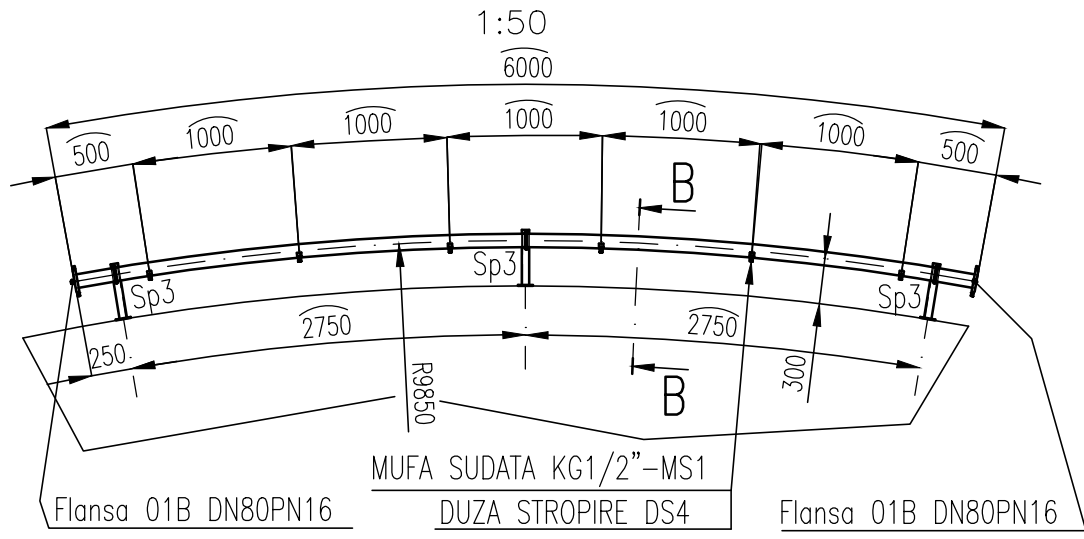
VEDERE DIN A
1:50



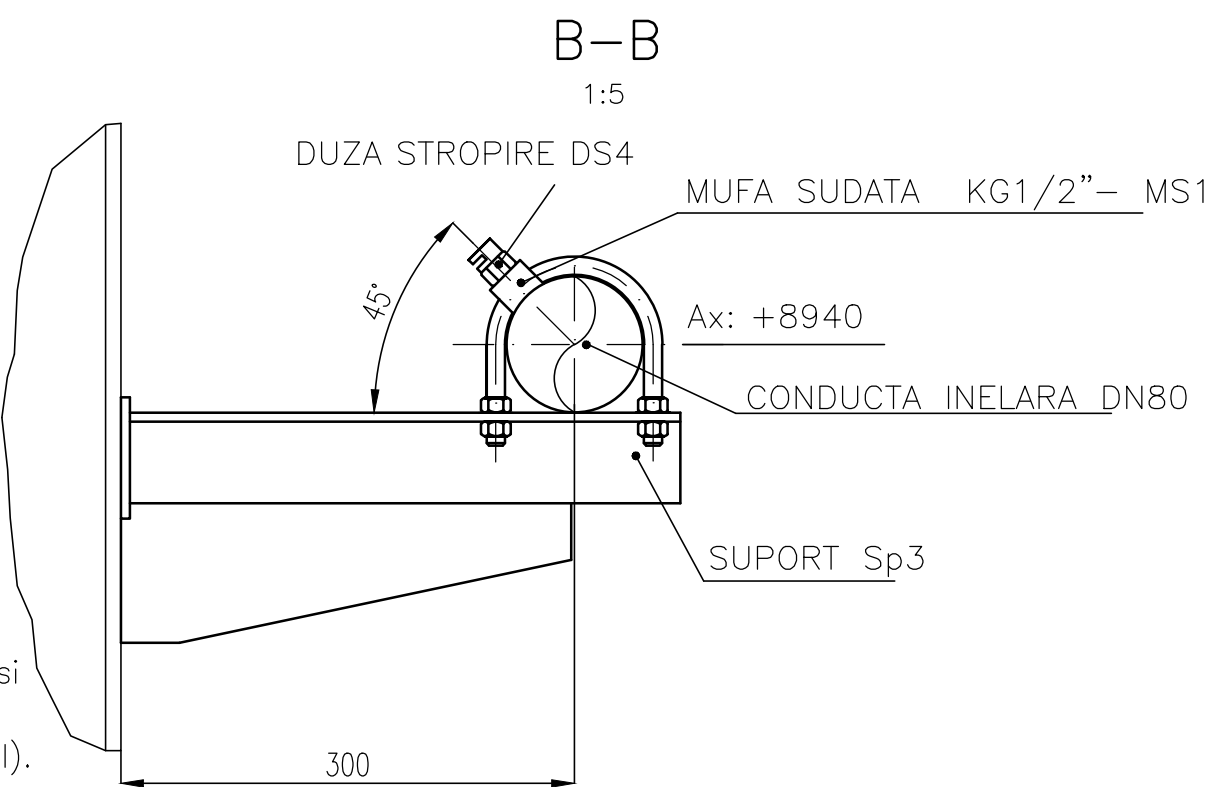
Detaliu montaj suporti Sp1, Sp2
1:5



DETALIU TRONSON INEL STROPIRE
1:50



Detaliu montaj duza stropire
si suport Sp3



MASURI DE SECURITATE LA INCENDIU ADOPTATE

Instalatia de racire pentru rezervorul cu capacitate de 2500mc
– inel de racire (DN80) pe care se monteaza duzele de pulverizare cu jet lamelar, unghi de dispersie 140° si
conducta de alimentare aferenta (DN150)
Inelul de racire se monteaza pe rezervor la cota +8,940m fata de limita inferioara a virolei de baza (virola I).
Traseul ascendent se realizeaza din tronsoane de conducta prevazute cu flanse.
Asamblarea tronsoanelor standard de conducta se realizeaza prin suduri cap-la-cap.

Date generale		DENUMIREA LINIEI		MEDIU	DN	Clasa cond.	Pn bar	Cond.de lucru max. Temp C	Cond.de proba Pres bar	Cond.de proba Fluid bar	Tratam. termice	Test	Izolatie	Observatii	
		DISTRIBUTIE APA PULVERIZATA		APA	100	10SC	5	20	7	10	APA	-	PT 100 RT 5-A	-	
TEVI	Simb.	Dimensiuni/indicatii		Executie	Standard			Material			Cant.	Notatii speciale			
	DN80	ø88,9x5		fara sudura	SREN10216-1			P235TR2			62m				
	DN100	114,3x5,6		fara sudura	SREN10216-1			P235TR2			20m				
COTURI	CS90°	114,3x5,6/f. sudura		forjat	SREN10253-2			P235TR2			2 buc				
	TS	A114,3x5,6/f. sudura		forjat	SREN10253-2			P235TR2			1 buc				
	RCS	ø114,3x5,6/ø88,9x5		forjat	SREN10253-2			P235TR2			2 buc				
TEURI REDUCII	Simb.	Descriere/indicatii		Presiune PN	DN	Suprafata etansare	Standard sau desen			Material		Manseta	Buc		
													1		
FLANSE	FP DN80	Flansa plata 01B PN16DN80			16	80	tipB	SREN1092-1	P280GH				20		
	FP DN80	Flansa plata 01B PN16DN80			16	80	tipB	SREN1092-1	P280GH				4		
	FP DN100	Flansa plata 01B PN16DN100			16	100	tipB	SREN1092-1	P280GH				2		
DUZE, MUFE	Simb.	Tip si dimens.		Desen	Mat.	Buc	PREZIOANE	Simb.	Tip si dimens.		Standard sau desen	Material	Buc		
	DS4	Duza stropire ø4/G1/2"		R-PSI-02	BzA110T	6,3		1B	M16x90		SR EN 1515-4	C45E	80		
	MS1	Mufa sudata KG1/2"		R-PSI-02	S235JR	6,3		1B	M16x120		SR EN 1515-4	C45E	16		
SUPPORTURI	Nr.suport	Tip marca	Nr.desen sau norma		Buc	PILUTE GARNITURI	stil 2	M16	SR EN ISO 4033			C35E	192		
	Sp1	Sp1	A656-PSI-02.01		1										
	Sp2	Sp2	A656-PSI-02.01		3		MU	80-16B1-3	SR EN 1514-1			cauciuc+ insertie metalica	10		
	Sp3	Sp3	A656-PSI-02.01		30		MU	100-16B1-3	SR EN 1514-1				2		